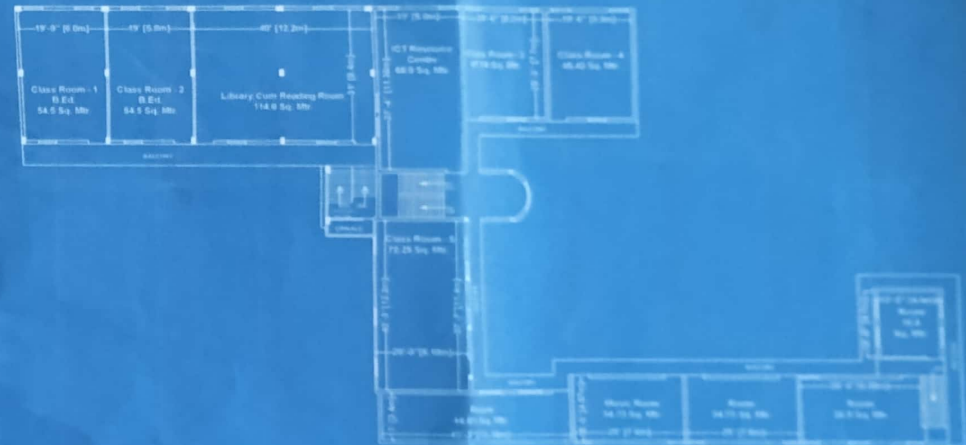
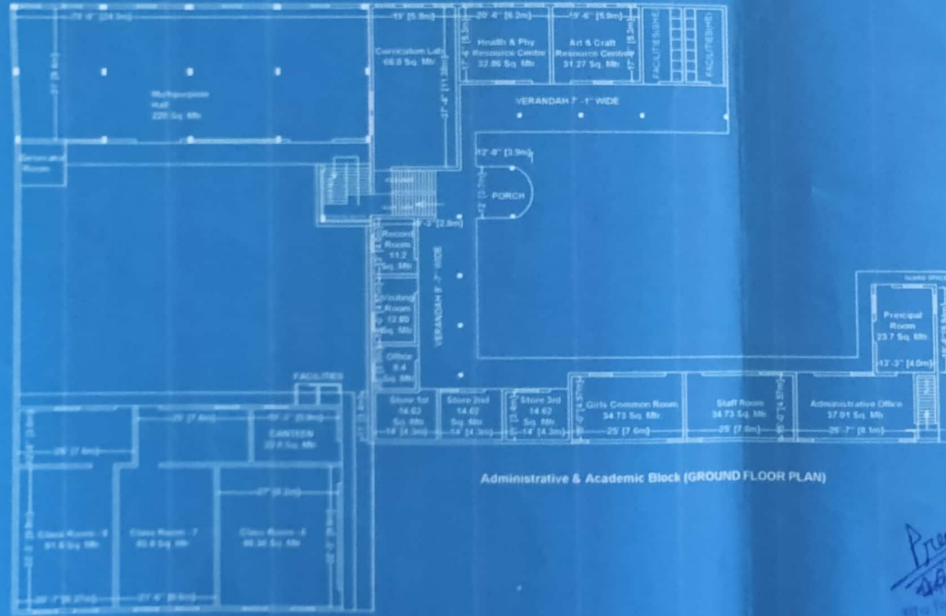
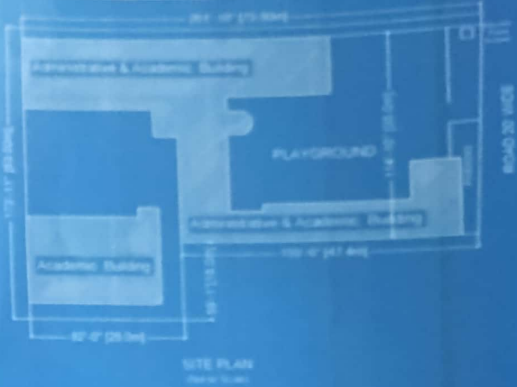


**Existing Building Plan For Astha College of Education ,Patta No.12 & Patta No.15 ,
Khasra No.385,386,V.P.O. Kanwarpura, Teh.Kotputli, Distt. Jaipur (Raj.)
(To be managed by Nav bharati Seva Samiti,Kanwarpura)**

FOR COURSE - B.Ed

Total Land Area 3489 Sq. Mtr.
Covered Area G.F. 14403 Sq. Ft. or 1338.5 Sq. Mtr.
Covered Area F.F. 10250 Sq. Ft. or 952.6 Sq. Mtr.
Total Covered Area G.F. + F.F. = 24653 Sq. Ft. or 2291.1 Sq. Mtr.

Distance From Kanwarpur Bus Stand 1.0 K.M.
Distance From N.H. 100 M.
Distance From S.O.M. Kanpur Hospital 7 K.M.



Signature of Secretary

Prerna
Secretary
Nav Bharati Seva Samiti
Kanwarpura

Signature
Secretary
Nav Bharati Seva Samiti
Kanwarpura

Signature
Secretary
Nav Bharati Seva Samiti
Kanwarpura

